



McDowall State School

Courtesy – Honesty – Knowledge

SCHOOL HISTORY

SUBURB CLOSE-UP: McDOWALL – WRITTEN IN 2018

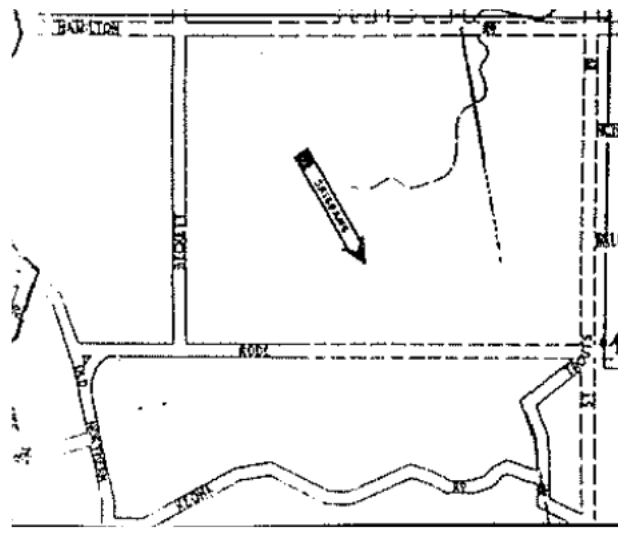
The McDowall suburb was gazetted in 1975. It is located 11kms from Brisbane's CBD. McDowall is an established suburb with a mix of large high and low-set brick homes catering mostly for families. From 2010, townhouse sub divisions have occurred on acreage blocks. The local area has a growing population of around 7,237 people with high percentage of home ownership (78.2%). The median age of people has increased to 38 years. There are 2,071 families within McDowall with the average number of children per family being 1.9. There is an increasing number of couple families without children (35%) and single parent households (11%). Some 30.6% of people are engaged with some form of self- education. 66.7% of the population identify as Australian born with a steady increase occurring in people hailing from migrant heritage. There is a language other than English spoken in 17.2% of homes.

Public transport in the area is well established with regular bus routes servicing local shopping centres and going into the Brisbane CBD. Mitchelton, Gaythorne and Enoggera train stations are closest, being approximately 10-15 minutes away.

A feature of the area is the Bunyaville State Forest Park, bordering McDowall along Old Northern Road. Parkland surrounding Cabbage Tree Creek and The Chermshire Hills also provide excellent recreational spots. The Chermshire Hills has the densest stand of grass trees in Brisbane and is an important environmental area because of its unique heathland vegetation. The Brisbane City Council established the Downfall Creek Bushland Centre in 1988 to cater for community environmental education and hands-on care for urban bushland.

The suburb was named after the McDowall family, who owned a vineyard on South Pine Road, in the vicinity of Newhaven Street. They also established an estate on a site near the present junction of Old Northern Road and Rode Road. The family reportedly came from Liverpool, England.

During the 1880s, the area was known as South Pine and local residents were involved in mainly farming, timber cutting and grape growing. Land in the McDowall area was purchased by I. Adams in 1881 and offered for sale in 1886. Land in the vicinity of Hackman Street was marketed as Kimberley Estate. The adjoining estate, owned by the Poultney family comprising McIlwraith, Gordon, Griffith, Burwood and Brook Streets was offered for auction in 1885 as the Everton Park Estate.



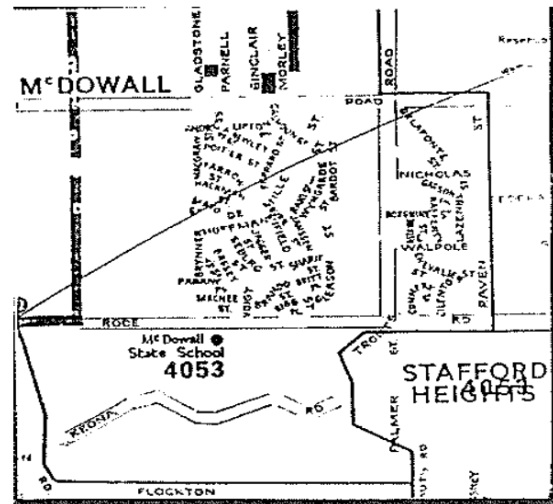
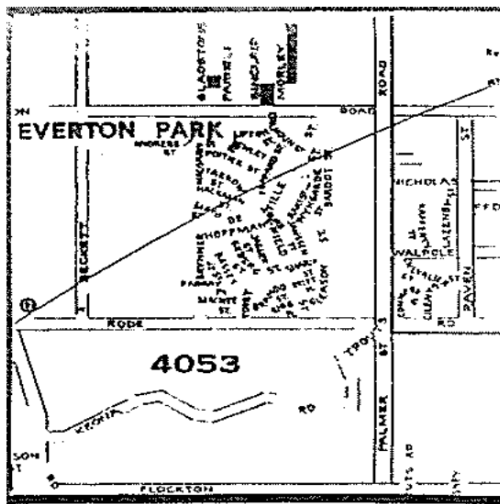


McDowall State School

Courtesy – Honesty – Knowledge

Other early landholders in McDowall included the Poultney family who were farmers. Joseph Poultney ran a sawmill in 1885 on the corner of South Pine and Stafford Roads opposite Gordon Parade. The first receiving office for mail was run by John Tucker in 1899. He had a small general store attached to his home and he collected the mail from Alderley. By 1908, both business and population had increased so Tucker built a new Post Office.

The first school opened in 1934 as the Bunyaville State School. Previously, children travelled to Enoggera. The McDowall State School opened in 1975. As the population grew, the Brisbane City Council wanted to call the new suburb, Annand, after Col Frederick William Gadsby Annand DSO, VD, FCIS, the first Town Clerk of Greater Brisbane (1925-1931). Residents calling themselves 'The Progress Association' didn't agree and petitioned the Council requesting that it be called McDowall after the newly built and named State School. In 1975, the name McDowall was approved by the Place Names Board of Queensland.



Members of the Bunyaville Pony Club once went riding through the forest where McDowall State School stands today. The area for the school was originally owned by the Brisbane City Council. At the time of the school's opening, McDowall was an urban, rural community and housing blocks were 1 to 2 hectares in area.

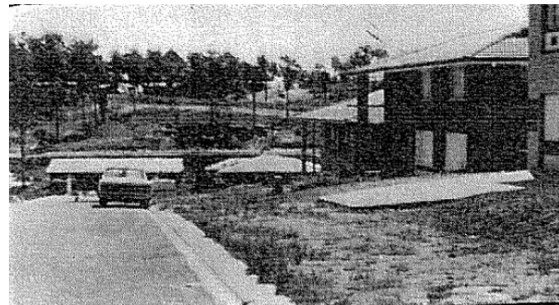
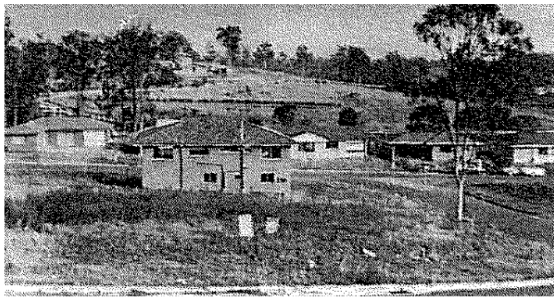
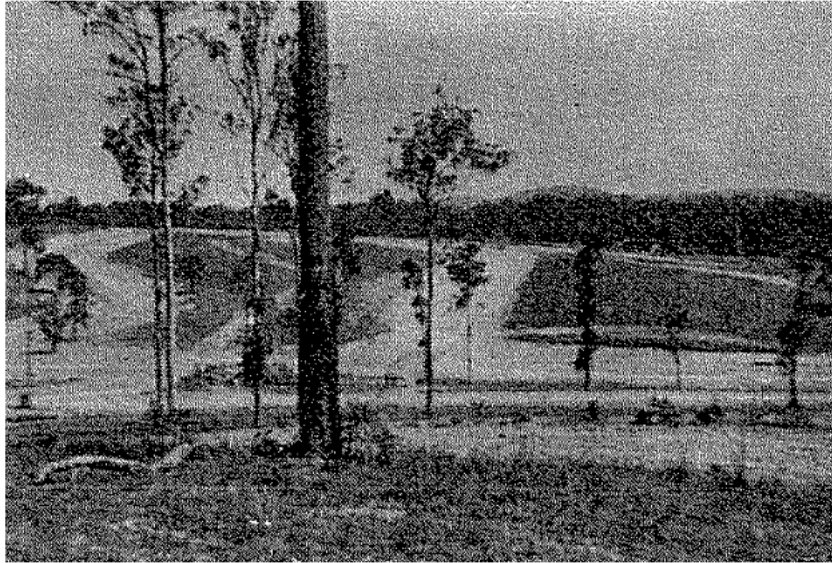
McDowall land is not very fertile with top soil often having to be brought into the area. Land uses included pig, chicken and dairy farms. Ifield Street once had a creek running through it. This water course has now been controlled with concrete work. Jagger Street was a pig farm. Hoffman Street was a grazing farm. Some of the families owning pig farms included the Bradshaws, Keongs, Keatings, Shaws, Keans, Finny Moores and the Hedges. Roads have been named after some of these families. The Kettletons ran horses. The Campbells had an orchard near the reservoir.

Sub-divisions in this area were part of the Paramount Estate, owned by Sir Leon Trout. He stipulated in his early 1970s developments that only prestige homes could be built on his land. Being linked to the big Hollywood Studios, by the name Paramount, all of the streets were named after film stars.



McDowall State School

Courtesy – Honesty – Knowledge



“North-West News February, 2007” “Our Brisbane.com 2008” “School History1983”



McDowall State School

Courtesy – Honesty – Knowledge

McDOWALL STATE SCHOOL

McDowall State School was constructed in 1974 and was named after Colonel John McDowall, a distinguished early settler to the area. Other names considered for the new school were Rode, Grand and West Chermshire.

The school was opened on 28 January, 1975. On the first day there were 38 children and 6 teachers. By the end of the first year there were 140 children. The first Sports Carnival was held at Bunyaville State Forest and was like a family picnic. The Principal and parents established the school uniform that same year. In 1978, new House T-Shirts were added to the school uniform. Trees to match each House: Acacia, Banksia, Grevillea and Melaleuca were planted at the front of the school by the House Captains.



School Identification Sign 2012

“One vivid memory I have of this first year is of the brother of one of the Year 1 children galloping up to the door of the classroom on his horse when it was time to go home. He assisted his brother to climb on board and then off they galloped into the sunset.” Kath Osborne, Teacher 1975-1985.

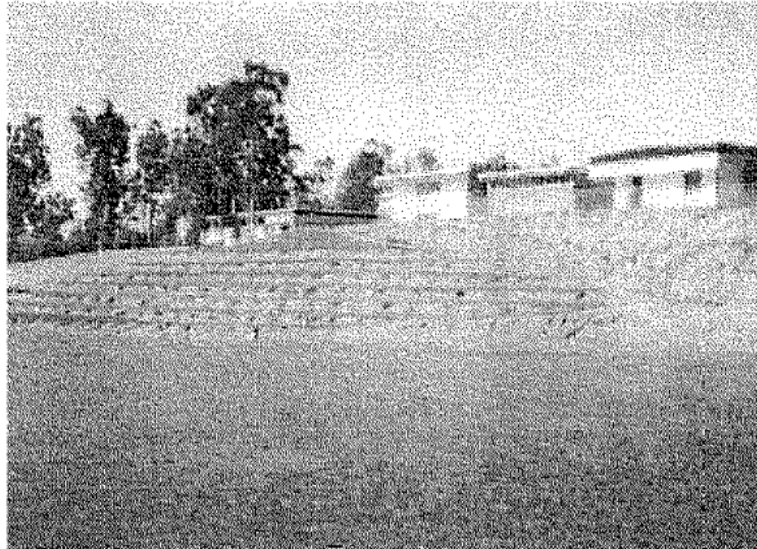
Carving a school oval out of a large area of hilly, rocky ground was a huge undertaking in 1979. After completion of major earthworks, a band of willing volunteers (teachers, parents, children and friends) completed the job by laying turf. In 1983, the Army assisted in the redevelopment of the oval and the shaping of embankments leading from the oval to school buildings.

1980 saw the construction of two tennis courts adjacent to the oval. A flexipave surface was selected and McDowall State School became one of the first Queensland schools to boast such fine courts. Subsequently, the P&C Association converted these courts into a multi-purpose courts complex, catering for tennis, netball and basketball. Later lighting was installed to make this facility available for community hire during evenings.



McDowall State School

Courtesy – Honesty – Knowledge



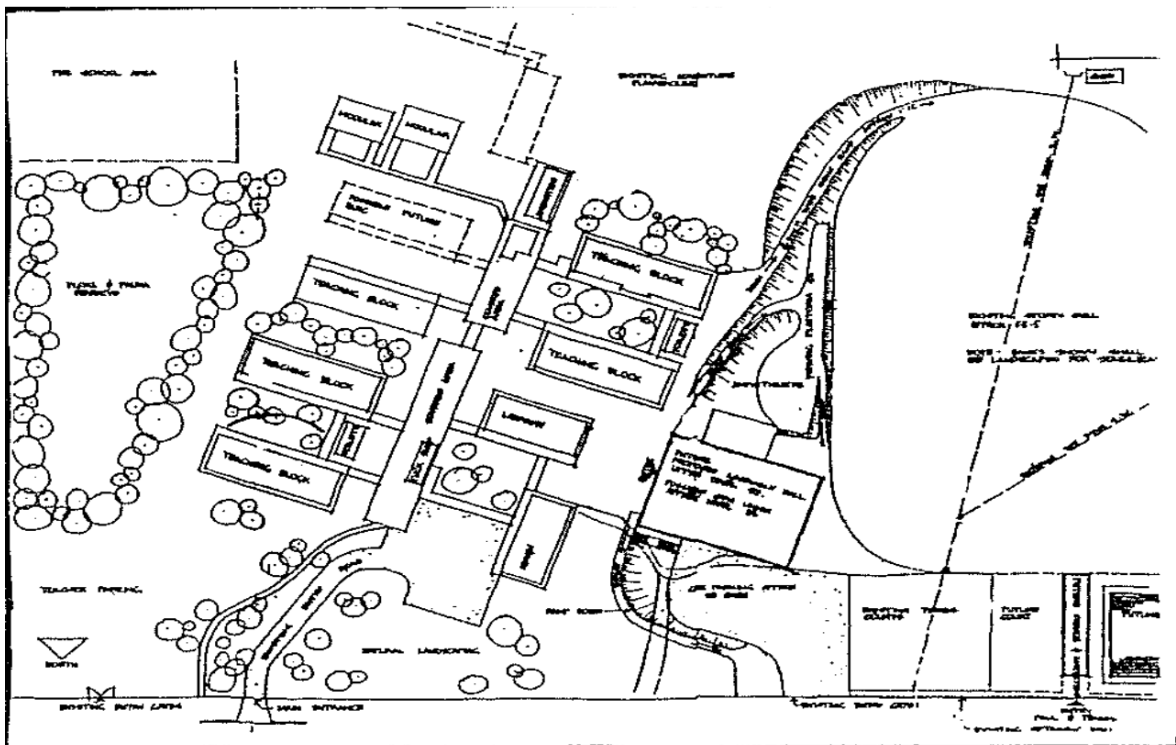
Traffic lights, mainly for use by school children, were installed on Rode Road in 1981. These were replaced and upgraded to regulate an intersection incorporating Rode Road and Foambark Street in 2011, when Defence Housing, opened the "Gordon Olive Estate". Gordon Olive was an Australian Air Force ace who piloted Spitfires during World War II.

Blocks A, B, C, D, E and F were constructed in 1974-5. Block G was built in 1978 and Block H was built in 1982. Modular Buildings have since been brought on site. A School Hall was constructed by the P&C Association in 1987 with Queensland Government Subsidy assistance. The School Hall is extensively used by school and community throughout the week. A purpose-built Music Facility, Library and Curriculum Centre is present. A Community Access Centre (K Block) was constructed by the P&C Association in 2006 and incorporates an Out-of-School Hours Care Programme (OSHC). The P&C Association constructed an Activity Indoor General Purpose Building to complement the Out-of-School Hours Care Programme and for school use in 2010. A large permanent covered play area was constructed to extend from this building in 2016.



McDowall State School

Courtesy – Honesty – Knowledge



The P&C Association renovated the Tuckshop and Uniform/Book Shop in 2006. Preparatory Year buildings were constructed for use from 2007 with PC2 constructed in 2010. Earthworks continued in 2007-8 with the construction of new playfields to the rear of the school and large shade structures between Teaching Blocks. In 2008, the P&C Association established a state-of-the-art Computer Centre for all students to access. In 2010, the Metro Street Car Park was constructed and the Preparatory Year Playfield was made level behind a large retention wall.



McDowall State School

Courtesy – Honesty – Knowledge

In 2011, a federal government initiative enabled the McDowall State School to relocate Years 1-2 in close proximity to the Preparatory Year for the first time. For many years, the school community had aspired to create an Early Childhood Education Sector within the McDowall State School. Three Modular Classrooms were demolished to make way for the multi-storey J Block which opened in October, 2011. Complementary to this project, the original School Hall was also extended to provide change rooms, toilets, showers, storage and a kitchenette.



In 2012, the P&C Association sought to complete the School Hall by duplicating the available floor area. The School Hall is now a multipurpose complex capable of being used as one large space or as two separate specific purpose areas: (a) Performing Arts – timber floor and stage (b) General Sports and Games – sports vinyl flooring.



During construction of the School Hall, a new main pedestrian access gate, pathway and school identification sign was constructed. The McDowall State School continues to maintain a well deserved reputation for high academic achievement, attention to the learning needs of students and the provision of quality extra-curricular programmes. Much has happened since the McDowall State School, built on a hilly plateau of 6.6 hectares in a semi-rural community, opened in January, 1975.



McDowall State School

Courtesy – Honesty – Knowledge

McDowall State School continues to maintain a well deserved reputation for high academic achievement, attention to the learning needs of students and the provision of quality extra-curricular programmes. Much has happened since the McDowall State School, built on a hilly plateau of 6.6 hectares in a semi-rural community, opened in January, 1975. Year 7 transitioned into secondary education from 2015. In 2019, the school has a steady enrolment of approximately 1,030 students catering for Preparatory to Year 6 primary education. The school continues to experience strong parent and community support. There is a great rapport between staff, parents and children. Motivated and dedicated staff remain committed to McDowall State School standards of excellence.



Should anyone have historical information or photos pertaining to the McDowall State School that may provide further perspective and detail of tradition, events and context of the past, we'd be delighted to hear from them. Please contact School Administration on telephone 07 3872 5333 or admin@mcdowallss.eq.edu.au

Every endeavour has been made to maintain a rural setting in balance with the progressive development of a large progressive primary school. Annual planting of native trees and shrubs continues. A small tract of land has been preserved along the eastern school boundary in almost a natural state as an area for environmental study. Attractive landscaped grounds include outdoor teaching spaces,





McDowall State School

Courtesy – Honesty – Knowledge

House Area plantings, adventure playgrounds, sporting ovals and fields, courtyard areas and environmental vision / sound buffer areas. A wide variety of native fauna is supported by native flora within the school grounds.

All permanent buildings but one, are at ground level and are configured as double-teaching spaces with flexible separation concertina doors. Buildings generally include four classrooms. Withdrawal rooms and a storage area are incorporated within most buildings.



Modular buildings are also configured as double-teaching spaces with flexible separation concertina doors. These buildings include two classrooms. The McDowall State School is well appointed and much has been and continues to be provided in teaching and learning resources by joint endeavor between Education Queensland, an active P&C Association and the community.



In 1998, an Enrolment Management Policy was implemented to ensure that continued enrolment growth remained within school capacity and was not likely to adversely affect school effectiveness due to overcrowding and undue strain on school infrastructure. Enrolment management continues to be an administrative necessity in best managing the number of new enrolment applications within school capacity. In 2015, Year 7 transitioned onto secondary education in Queensland. In better managing vehicle access to the school and seeking to heighten pedestrian safety on local area street infrastructure, from 2015, McDowall State School operates on the two timetabled sectors of Early Childhood Education (Preparatory to Year 2) and Primary Education (Years 3 to 6).



McDowall State School

Courtesy – Honesty – Knowledge



In 2013, the McDowall State School excised land into Brisbane City Council ownership and management to support the construction of a designated “Kiss-and-Ride Set-down and Pick-up Lane” surrounding an extended car park area. This \$300,000 investment by Council and the Qld Government was opened in July, 2013. While this project was underway, the School Tennis (Multi-Purpose) Courts were reconditioned and resurfaced.



Parent use of the “Kiss-and-Ride Set-down and Pick-up Lane” proved so popular that in 2018, McDowall State School built a large permanent all-weather waiting area for students awaiting parent arrival. This structure was modelled on the School Oval large permanent all-weather structure built in 2017, to assist with sporting event management.





McDowall State School

Courtesy – Honesty – Knowledge

In 2016, the McDowall State School established its' Instrumental Music Immersion Programme. This same programme was officially recognized by Education Queensland as a Programme of Excellence from 2018. Eventually, two Band Classes and two Strings Classes will be established within each Year Level extending from Years 3-6. To ensure that professional tutorial and ensemble space was retained within the school, a Performing Arts Classroom (with storage facility) was built in 2016.



The McDowall State School P&C Association sought to provide best quality adventure playground equipment experiences for both P-1 and Years 2-3 students within construction occurring during 2018. A Sensory Motor Garden was also established beside PA Block.

